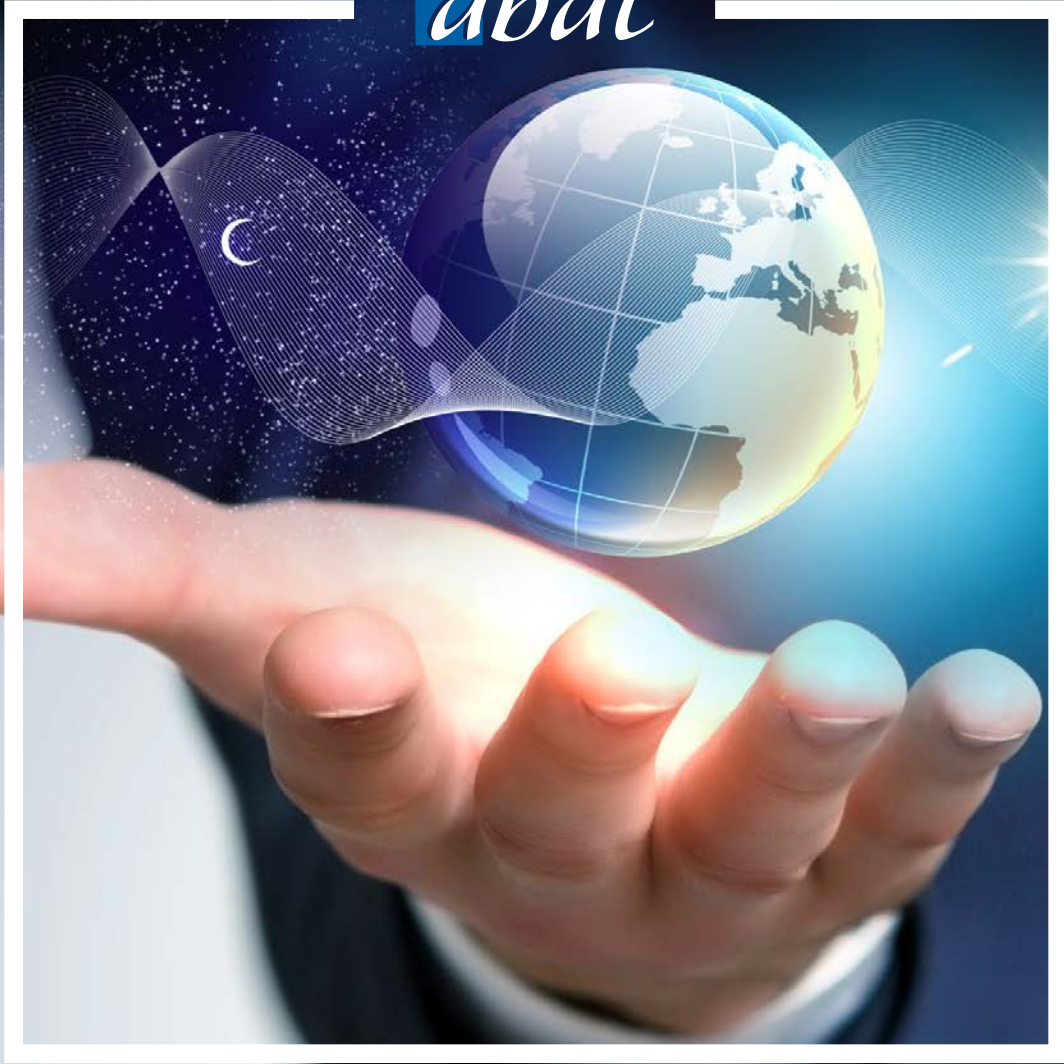


**abat**



# PRESS KIT

abat

# CONTENT

---

Company profile	3
Facts and figures	4-5
Consultancy offer	6-7
Managing Board	8-10
Contact	11

# COMPANY PROFILE

---

abat is an international SAP service provider and product supplier, which optimizes business processes and supports them with its own solutions. The focus is on the automotive and discrete manufacturing and logistics sectors. The company consults in all phases of IT service management - from IT orientation to business processes, through development, to the implementation and maintenance of standard solutions. The experts developed the software PLUS based on SAP for the control of production processes in the manufacturing sector. abat also offers holistic consultancy in the area of sustainability management. abat is currently the only SAP SE introduction partner for the sports software SAP Sports One.

The company was founded in 1998. Today abat employs more than 700 people worldwide and generates sales of over 65 million euros in 2019

abat's customers include Audi, BMW, Daimler, Qoros and Volkswagen, ThyssenKrupp, Deutsche Post Worldnet, DHL and SV Werder Bremen. abat is represented in Germany at the locations in Bremen, Munich, St. Ingbert, Walldorf and Wolfsburg. For better on-site support, the company has offices in the US, Mexico and Belarus. abat is the development partner of SAP SE in the SAP Partner Edge Program for Application Development.

abat was once again awarded by TopJob as one of the Germany's best employers in 2017 in its size class. The company also carries the seal of quality TOP-Company and OPEN-Company of the job evaluation platform kununu.com.



Head office abat ©abat

# FACTS AND FIGURES

---

Head office	abat An der Reeperbahn 10 28217 Bremen Germany
Locations	Bremen, Munich, St. Ingbert, Walldorf, Wolfsburg Puebla (Mexico) Minsk (Belarus) Birmingham AL, Atlanta GA, Detroit MI (USA)
Management	Gyde Wortmann Andreas Arp Peter Grendel Björn Lampe Hinrich Meisterknecht Holger Pralle Ronald Wermann
Company development	Foundation as act GmbH in 1998 Change of name to abat AG in 2001
Services/Products	Manufacturing Execution System PLUS SAP for automotive SAP for logistics Application Management Service System integration Business Intelligence SAP Sports One Sustainability Management SAP HANA
Number of employees	Over 700 worldwide
Turnover	Over 70 million euros in 2020
Certificates/Distinctions	SAP Service Partner (PartnerEdge Service) SAP development partner (PartnerEdge Build) SAP Sales Partner (PartnerEdge Sell) Active as an SAP Service Partner within the SAP Early Adopter Care Program (previously RampUp) SAP Recognized Expertise in Automotive (Germany) SAP Recognized Expertise in Supply Chain Management (Germany) SAP Recognized Expertise in Travel & Transportation (Germany) SAP Recognized Expertise in Consumer Products (Germany) SAP Recognized Expertise in SAP S/4HANA (Germany) Strategic IT-supplier of Daimler AG ISO 27001:2013 ISO 9001:2015 TISAX Certification in preparation Top Job Certification 2013, 2015, 2017, 2021 Kununu Top Company Kununu Open Company Sponsor of the new economy Happy Working Place Great Place to Work Margazin FOCUS: among the top 100 employers of medium-sized companies 2021

# FACTS AND FIGURES

---

## Memberships

B.A.U.M. e.V.	<b>German Environmental Management Association reg. association</b> abat is part of the network of sustainable companies.
BVL	<b>Federal Association of Logistics</b> abat works with the BVL Campus/DAV/IUBH in Bremen, e.g. in the form of guest lectures.
BVMW	<b>German Association for Small and Medium-sized Businesses</b> abat is part of the network for German Medium-Sized Companies, driving topics around newWork and sustainable cooperation and hosting working group meetings.
DSAG	<b>German-speaking SAP User Group</b> abat participates in various working groups and circles. e.g. deputy spokesman of the working group „Transport & Logistics“, collaboration in the WGs for Solution Manager, EWM, TM and S/4HANA.
DVNW	German Procurement Procedure Network
Intrinsify.me	Is the think tank and the leading network for the new working world and modern business management. abat is: <ul style="list-style-type: none"><li>■ active as a „promoter of the new economy“,</li><li>■ host for local meetings,</li><li>■ employer awarded „Happy Working Place“,</li><li>■ organizer of workshops in the context of newWork.</li></ul>
ifit	Free Institute for IT Security e. V.
ISACA	abat is a member of the Information Systems Audit and Control Association
ITS/VDA	Information technology and standards for the automobile industry as part of the Association of the Automotive Industry.
PUU	<b>Environmental Companies Partnership</b> abat has been a partner since November 2017.
SmB	<b>Science meets Business at Bremerhaven University of Applied Sciences</b> abat is a business partner for logistics and actively promotes cooperation between the university and the local economy.
UN Global Compact	abat supports the world’s largest and most important initiative for responsible corporate management.



# CONSULTANCY OFFER

---



© sp4764 - Fotolia.com

## Automotive

abat is one of the leading SAP service providers for the automotive industry. The company provides SAP solutions for the entire value creation chain, from vehicle development, through procurement, production and logistics, to after-sales service. The secret of abat's success is efficient SAP process workflows, customer-specific add-ons and the Manufacturing Execution System PLUS, and combining these with modern product management methodologies and integrated industry knowledge. abat is an SAP services partner and has SAP Recognised Expertise for the automotive industry in Germany.

The automotive experts at abat can optimise your supply chain management as easily as your maintenance schedule. Customers also benefit from abat's expertise in accounting, financial controlling and business information. Yet another benefit: the Manufacturing Execution System PLUS based on SAP offers IT service providers a standard product that makes it possible to manage production processes efficiently.

abat advises leading automotive manufacturers such as Audi, BMW, Daimler, MAN, Volkswagen and Qoros.

## Discrete Production

Thanks to its years of expertise in production control in the automotive sector, abat is also experienced in discrete production. The production control and management system PLUS from abat is the only standard product for this sector in the world. PLUS controls production lines with high levels of complexity, large volumes and a large number of variants. It is of use in situations where BOMs determine the product composition and work plans determine the production sequence. The software manages production processes for complex components and equipment having serial numbers, which are later installed in cars, planes or kitchens.

This high-availability solution ensures integrated quality management. It records all errors on an ongoing basis, coordinates rework, documents all safety-relevant issues and enables in-depth evaluations. The Manufacturing Execution System has been developed on the basis of SAP NetWeaver and is fully integrated into SAP ERP. Companies with SAP Business applications can configure their processes from end to end – no further interfaces are required.

The system has been used for production management in Mercedes Benz passenger car division and at Smart for years – both in the assembly plants and in a component plant. Chinese vehicle manufacturer Qoros also relies on PLUS.

---

## Logistics Business Area

abat offers solutions for supply chain optimisation for logistics experts in all industries and for logistics service providers. These solutions include intralogistics (SAP WM or EWM, SAP ERP), transport management (SAP TM) and service parts management (SAP SPM). abat consultants support the implementation of strategies, processes and IT architectures. They develop roadmaps and template approaches as well as customer-specific add-ons. At the same time, thanks to sound project and program management, they ensure that budgets and time schedules are observed.

abat has specialist expertise in SAP Transport Management (TM) and SAP Extended Warehouse Management (EWM). abat is a RampUp partner for SAP TM and is therefore always up to date in terms of releases and features. abat has pooled its intralogistics knowledge in the SAP EWM Business Unit. The warehouse management experts work constantly to create add-ons to optimise warehouse processes, such as picking using data glasses (pick-by-vision). This project was a strategic collaboration between abat and Ubimax, suppliers of industrial wearable computing solutions, to connect the data glasses solution xPick to SAP EWM.

abat is an SAP services partner and has SAP Recognised Expertise for travel and transportation in Germany. In the logistics sector, abat's customers include ThyssenKrupp Material International, Deutsche Post Worldnet, DHL and VS HEIBO Logistics.

## SAP Sports One

abat is currently the only introduction partner for the sports software SAP Sports One. The solution developed especially for sports helps football clubs to remain successful in the long run. abat accompanies professional and amateur teams with the introduction of the software - from the strategy to implementation and integration into the IT landscape of an association, through to optimization and maintenance.

The cloud solution based on the development environment SAP HANA Cloud Platform provides a uniform platform for the efficient management of players and entire football teams. SAP Sports One penetrates and connects all areas of an organization - from the management to the coaching staff and the talent management up to the talentscouting. The analysis of individual games is just as possible as the training planning of the players. A total of five product modules are available: Team Manager, Training Planning, Playerfitness, Performance Insights, Scouting.

The German national team, FC Bayern München, TSG 1899 Hoffenheim and 1. FC Nürnberg are working with SAP Sports One. Thanks to abat now also the regional-league team FC-Astoria Walldorf and the first division team Werder Bremen. abat has also introduced there the solution for precise passports.

## Sustainability Management

As an SAP service provider abat combines its IT and process expertise in automotive, discrete manufacturing and logistics with sustainability know-how. This combination is of great advantage because, especially in complex environments, the effects of digitization are strongly linked to the requirements of sustainability. abat focuses on four core areas: strategic sustainability management, sustainability reporting, material flow management and preparation and support for certifications. As one of the few SAP service providers in Germany, abat consults on holistic sustainability management.

# MANAGING BOARD

---

**Gyde Wortmann**, Co-founder and Management Board Member



Gyde Wortmann is responsible for the Finances of the company, besides customer projects. Up to the foundation of the company, this Business IT Specialist held various executive positions at VW gedas GmbH. She headed international SAP projects with the focus on accounting. She was mainly responsible for the development and rollout of “Standardization of Accounting of Subsidiaries of Volkswagen AG” (START). Before that, she worked as Business Analyst at LSI Logic Products GmbH up to 1992.

*“For me, abat is family environment, in which we cooperate trustfully and passionately.”*

**Andreas Arp**, Board member



Andreas Arp studied physics and mathematics at the Universities of Bremen and Bordeaux. In 1998 he started working for SAP SE as a software developer in the R/3 standard development division. In 2001 he moved to abat AG, working as a senior consultant, senior developer and project manager on numerous SAP projects for Daimler AG. He has been on the management team at abat since 2008, and became a board member in 2014. As well as a range of duties within the management team, he is the Key Account Manager for Daimler AG. The physics graduate specialises in the planning and implementation of highly complex IT projects.

*“For me, abat represents networking, cumulative expertise and personal responsibility for your actions – together with a respectful attitude towards customers and colleagues.”*



---

**Peter Grendel**, Board member and managing partner of abat+



In addition to the Sales and Marketing divisions, Peter Grendel leads the development of the production control and management software PLUS as well as customer projects. The business graduate previously held a range of management roles at SAP SE including the roles of Vice President for Support Management and Sales Director for Wholesale Customers. He was responsible for implementing large-scale projects in the automotive sector, such as AmSECAM for Daimler AG. Since 2010, Grendel has been a managing partner of abat+, a subsidiary of abat, and he was appointed to the board of abat AG at the start of 2015.

*“For me, abat means 100% concentration on our customers and their success, 100% team spirit and motivation, 100% reliability and sustainability.”*

**Björn Lampe**, Board member



Björn Lampe began his career as a technical IT assistant and, after training as a wholesaler, he studied business administration at Bremen University of Applied Sciences. He joined abat for his final year project in 2001 and since then has worked as senior consultant, senior developer and project manager on numerous SAP projects for VW and Audi. He has been on the management team at abat since 2008 and was appointed to the board at the start of 2014. As well as a range of duties within the management team, he is the Key Account Manager for the VW Group. As a graduate in business administration – with 20 years of experience as a software developer and system architect – Björn Lampe specialises in agile project management.

*“For me, abat represents the freedom to explore new avenues with customers and colleagues and to see people and projects growing in the process.”*

---

**Hinrich Meisterknecht**, Co-founder and Management Board Member



Hinrich Meisterknecht is responsible for major customers from the automotive sector and for the development of the abat locations in Puebla in Mexico, Tuscaloosa and Atlanta in the USA. Before the foundation of abat, this electrical engineer held various executive positions at VW GEDAS GmbH. There, he mainly cooperated on the development of the SAP division and implemented numerous international projects. Before that, he worked at LSI Logic Products GmbH as Software Engineer.

*“For me, the special feature of abat is the successful concept.”*

**Holger Pralle**, Co-founder and Management Board Member



Holger Pralle is responsible for major customers from the automotive sector and for the development of the abat location Minsk in Belarus. Up to the foundation of the company, this electrical and industrial engineer held various executive positions at VW GEDAS GmbH. There, he was responsible for numerous international SAP projects. Before that, he worked at different positions at LSI Logic Products GmbH.

*“For me, abat stands for customer value and transparency.”*

**Ronald Wermann**, Co-founder and Management Board Member



Ronald Wermann is responsible for the development of the logistics division as well as for Sales and Marketing of abat. Up to the foundation of the company, this data processing specialist worked at VW GEDAS GmbH as SAP Division Head and Sales Manager. Before that, he held the position of Regional Software Manager and various other executive positions at Siemens Nixdorf Informationssysteme and Nixdorf Computer AG and also worked as Director of a software company in Hamburg.

*“For me, abat implies successful implementation of our ideas about work quality and customer and employee satisfaction in a consultancy.”*

# CONTACT

---

## Company contact

abat  
Ronald Wermann  
An der Reeperbahn 10  
D-28217 Bremen

T.: +49 421 43 04 60  
E.: [ronald.wermann@abat.de](mailto:ronald.wermann@abat.de)  
W.: [www.abat.de](http://www.abat.de)

## Press contact

Orbitak AG  
Frank Lenk  
Schwachhauser Ring 78  
D-28209 Bremen

T.: +49 421 566 33 114  
E.: [frank.lenk@orbitak.com](mailto:frank.lenk@orbitak.com)