



protect

Prioritize information security. Preserve the business.

OVERview

Information security

How to protect your company data



How to protect your company data

Information is corporate values that need to be protected. Here, not only the security of the company data and customer data should be considered, but also storage locations (e.g. mobile devices such as USB sticks, smartphones, notebooks, laptops) and transmission paths (e.g. e-mail, cloud) should be taken into account.

Security in the company

Every employee in the company has an impact on IT security. Today's threats, e.g. through ransomware make it clear that a wrong click by not instructed people can severely impair the day-to-day business of a company or even bring it to a standstill.

Information Security Management System (ISMS)

An ISMS reduces your IT risks to an acceptable level and thus continuously increases your security level in the company. You are better prepared for damage scenarios and stabilize the continuation of your important business processes. By the way, certification according to ISO 27001 gives you competitive edge on the market.

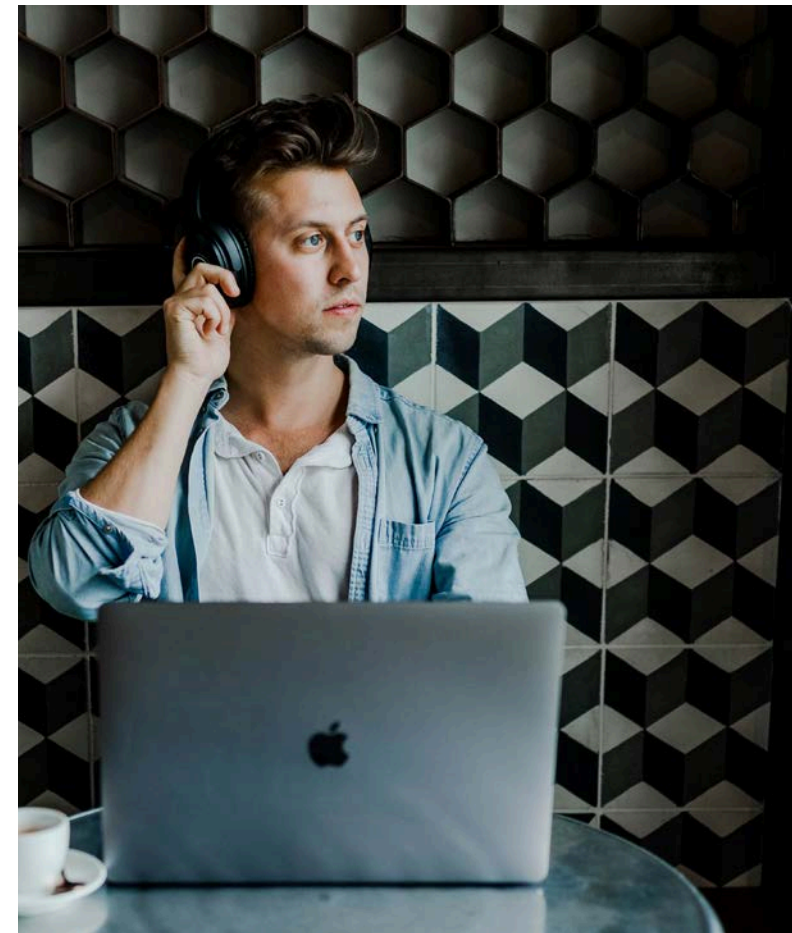
Customer requirements and legal specifications

Customers are increasingly demanding that their contractors use an ISO 27001 certified information security management system (ISMS), IT-Grundschutz, TISAX® or the Cybersecurity Framework (NIST). In addition, the new rules of the General Data Protection

Regulation require a functioning ISMS (art. 32 EU GDPR). For KRITIS companies, the IT security law also defines information security requirements.

Information Security Manager

An information security manager is the central point of contact and coordination for information security in the company. His tasks range from the creation of various security guidelines to the implementation of audits and risk analyzes, review of security incidents and training of employees to the establishment and operation of an information security management system (ISMS). He always works with the management, the IT manager, and the data protection officer. The tasks have become so important today that every company should fill this role..



How we can support you

To help you achieve more information security in your company, we offer consultations, including the following topics:

ISO 27001 Consultation

- Support during the implementation of an ISMS according to ISO 27001
- Implementation of risk analyzes, employee training on security awareness or outsourcing checks for your service providers
- Support in establishing processes, defining roles / responsibilities, and preparation of the necessary documentation

Consulting on TISAX®

- Support during the implementation of an ISMS according to TISAX®
- Support during the completion of the questionnaire and assignment of a correct level of maturity (level 1-5)
- Creation of a gap analysis, with the results of which you can plan and implement concrete measures to receive the TISAX® label
- Implementation of risk analyzes, employee training on security awareness or prototype protection
- Support in defining roles/responsibilities and preparation of the necessary documentation

IT-Grundschutz Consultation

- Determination of your information network based on a structural analysis
- Carrying out a protection requirement determination and a modeling or assignment to the IT-Grundschutz modules
- Determination of the target / actual comparison based on the IT-Grundschutz check
- In the case of increased protection requirements: implementation of risk analysis, evaluation, and preparation of a list of measures

KRITIS Consultation

- Support in fulfilling legal requirements, e.g. by implementation of an ISMS according to ISO 27001, IT-Grundschutz or the Cybersecurity Framework
- Implementation of risk analyzes, employee training on security awareness or with outsourcing checks of your service providers
- Consideration of industry-specific requirements
- Support in the implementation of the IT security catalog for network operators and various B3S

NIS-2 Consulting - Readiness Check

- Determine the relevance to your organization
- Determine the status quo of your security performance
- Development of a roadmap for NIS-2 compliance with corresponding work packages
- Implementation of the work with a scope tailored to your organization

ISMS-Manager – Informationssicherheitsbeauftragter (ISB)

- Engage of an external information security manager (ISB) for the operation of an ISMS
- Elimination of conflict of interest
- Individual consulting contingent for internal information security officers

1st / 2nd Party Audit

- Internal auditing of your management system (1st party)
- Auditing of your service providers (2nd party)
- Auditing of compliance with your specifications or orientation to your IT security standards
- On-site or remote audit program if required
- Documenting of the results and creating a list of recommendations

IT Risk Analysis

- Determination of the protection requirements of your systems, company data, etc.
- Determination of the relevant dangers (e.g. fire, water, theft, ransomware)
- Consideration of confidentiality, integrity, and availability
- Use of common standards, e.g. the ISO 27005

Cyber Security Check

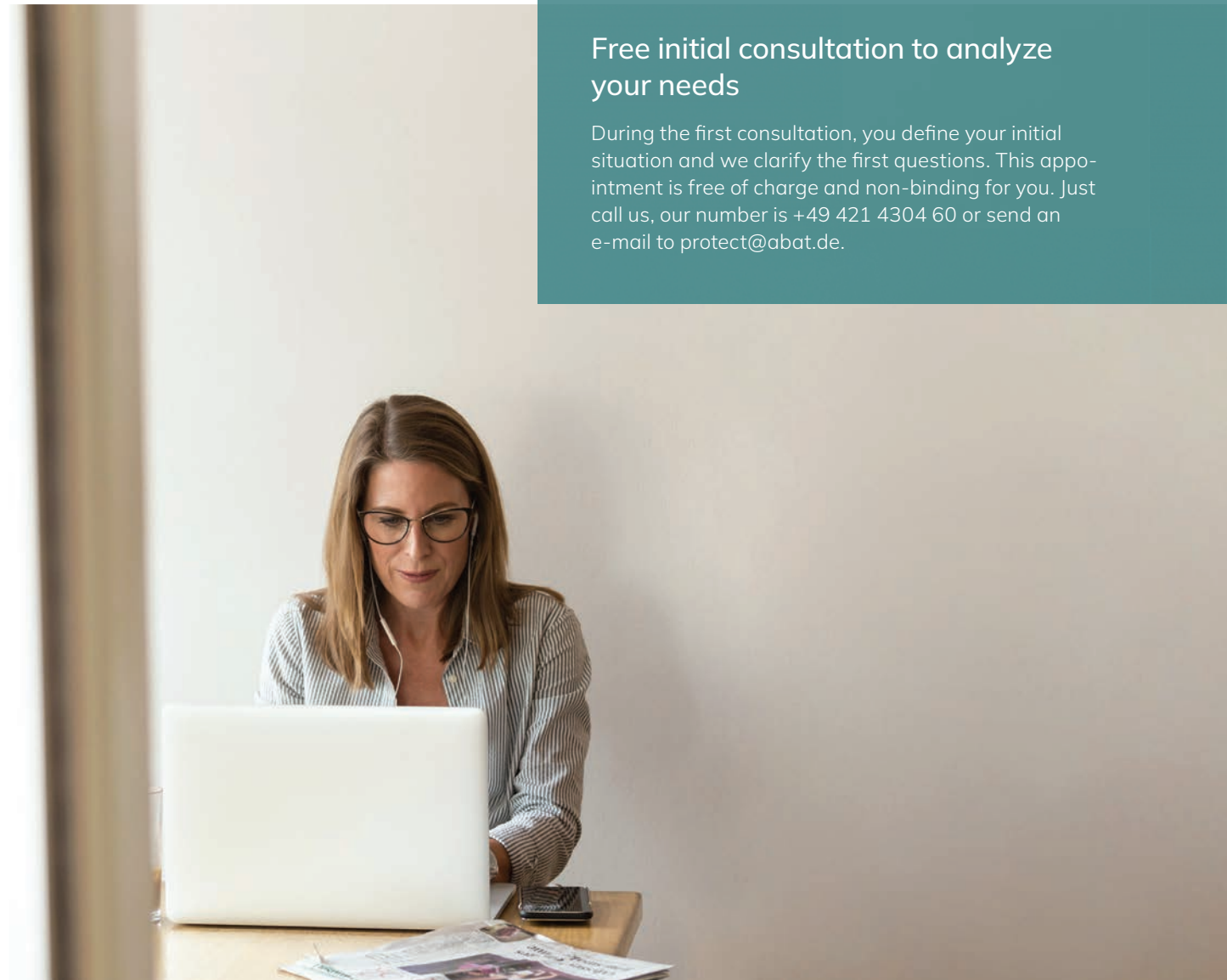
- Analysis of your company's information and IT security
- Review of the implemented measures, together in a workshop at your location
- Analysis and testing based on recognized standards (e.g. ISO 27001)
- Consideration of individual industry-specific requirements
- Documenting the results and creating a list of recommendations

Awareness Training

- Carrying out of awareness-raising measures, e.g. on-site training or webinars
- Coordination of the training courses with your company needs
- Practical examples are used

Free initial consultation to analyze your needs

During the first consultation, you define your initial situation and we clarify the first questions. This appointment is free of charge and non-binding for you. Just call us, our number is +49 421 4304 60 or send an e-mail to protect@abat.de.



Consultation with a sense of proportion

We support you with consulting services to develop your information security in your company. With us you are well prepared for certification or testing processes. Our consultants are licensed as ISO 27001 auditors by DEKRA Certification GmbH and have among other things Training as a BSI IT-Grundschutz practitioner as well as numerous other training courses completed. Furthermore, we have years of experience and have the additional test procedure competence according to § 8a BSI law. Regular advanced training ensure that we are guided by current standards. It is our goal to inform you of dangers in IT or to optimally prepare you for an exam and to develop practical and sustainable solutions together. It is important for us to take into account the individual characteristics of your organization..



CONTACT

Hans Schmill

Member of the Executive Board

protect@abat.de

ABOUT US

abat

The abat Group, founded in 1998, is an SAP service provider, innovative software developer and provider of complete solutions for software-supported process optimization –

primarily in the core industries of automotive and discrete manufacturing as well as in logistics processes and production control. With our six service areas, we give companies the freedom they need for new ideas, efficient processes, and future-oriented solutions.

In the **consulting** service area, we advise and support you in all phases of an SAP project – from conception to implementation to operation of your SAP system. With abat **manufacture**, you receive digital, high-availability solutions for production control in the complex manufacturing industry. With abat **transform** we offer you innovative and unique solutions that make you special: from AI to cloud to X-Reality. The **PLM** area offers comprehensive process consulting with the goal of achieving a continuous data flow across PLM, ERP and MES. Offerings from the **protect** area help customers secure information and maintain the confidentiality, availability, and integrity of business relationships. Finally, our **sustain** experts advise on how sustainability and CSR reporting can be strategically and structurally anchored in the company.

abat | An der Reeperbahn 10 | 28217 Bremen | Germany | +49 421 43 04 60 | www.abat.de